




# **1C:ENTERPRISE**

**MODERN BUSINESS  
AUTOMATION**

The background is a vibrant yellow with abstract, low-poly geometric shapes in shades of orange and red, primarily located in the top-left and bottom-right corners. The text is centered on the left side of the page.

**1C:ENTERPRISE**  
IS ALL THE RAGE



Innovative world-class technology platform

A system with built-in applications for efficient management and accounting

Over **1,000** mass-market solutions

Over **5,000,000** users in businesses and public institutions

Over **300,000** engineers develop applications in 1C:Enterprise programming language

The background features a solid orange field on the left, transitioning into a series of overlapping, semi-transparent geometric shapes in shades of orange, red, and yellow on the right side.

**1C:ENTERPRISE**

WORLD-CLASS  
TECHNOLOGY PLATFORM  
FOR DESIGNING  
CORPORATE SYSTEMS

- Scalable, fault-tolerant architecture
- Supports large-scale corporate systems
- Cross-platform design, open-source software support:
  - Linux, Windows, Mac OS
  - PostgreSQL, MS SQL Server, IBM DB2, Oracle Database
- Cloud (SaaS) technologies
- Mobile applications for Android, iOS, and Windows Phone
- Flexible and customizable for specific business processes and a company's proprietary techniques
- Built-in Business Intelligence tools
- Ability to create geographically distributed systems
- Openness and integration with the absolute majority of software and hardware
- Data access control and management
- Security: confidential information, trade secrets, and personal data

**TC:ENTERPRISE  
PERFORMANCE  
AND SCALABILITY**

**ENSURE EFFICIENT AUTOMATION  
OF LARGE CORPORATIONS  
AND PUBLIC INSTITUTIONS**



**Russian Post.** An automated 1C:Enterprise system for over 47,000 workplaces. Providing a unified methodology for all methods of accounting along with real-time inventory management, monitoring, and analysis of business activities.



TRANSMASHHOLDING

**Transmashholding.** The 1C solutions suite is the corporate automation standard, featuring the ERP, CPM, WMS, and ECM systems. About 20 000 workplaces are automated by utilizing the suite. Deployment of the unified corporate system generated a confirmed economic effect over US\$ 147,000,000.



**Moscow City Government.** A unified cloud system for financial management. Deployed by more than 2,100 city institutions with a total of 15,000 users and 500,000 employees. It is based on SaaS technology. It provides over US\$ 18,000,000 annual cost savings.



**1C:ENTERPRISE**  
**A LARGE-SCALE SYSTEM**





**Bashkir Power Grid Company.** ERP, ECM, MDM, and EAM systems, all based on 1C:Enterprise platform, deployed at more than 10,000 workplaces. This ensures efficient monitoring of business processes as well as management based on real-time data.



**KAMAZ.** More than 8000 KAMAZ group workplaces are automated with 1C:Enterprise platform. This provides cost reduction, streamlines accounting and management, and ensures real-time consolidated reporting and financial analysis over all subsidiaries.



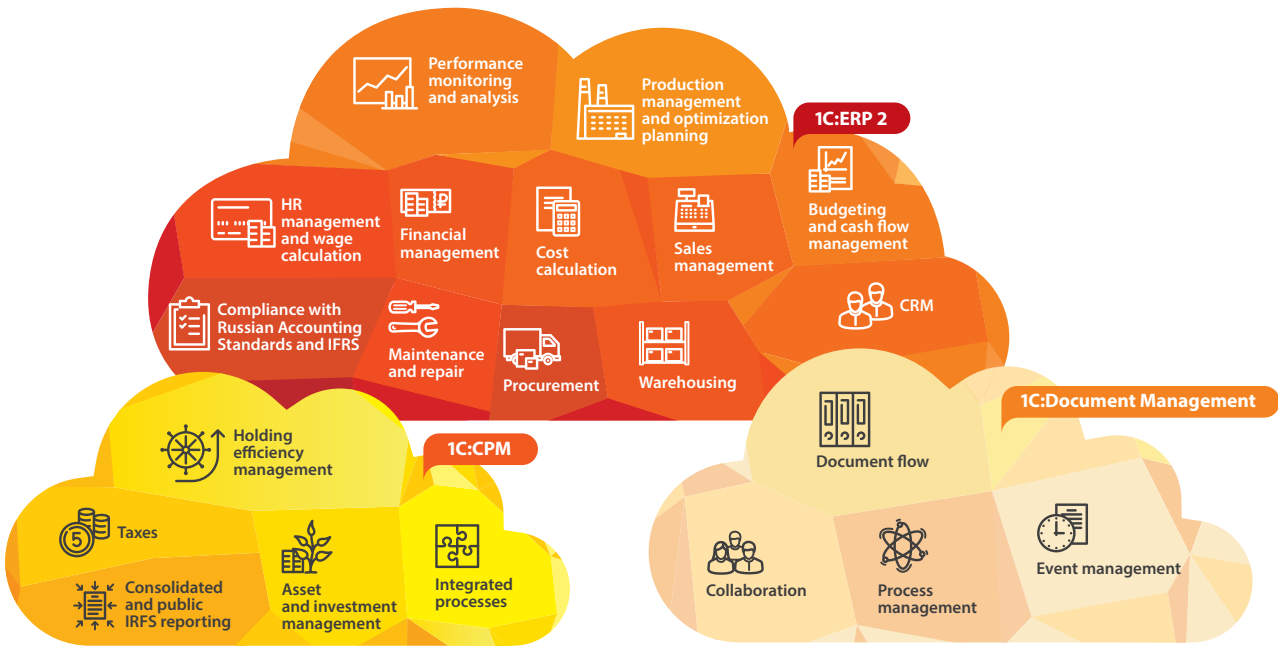
**Sollers.** More than 6,000 automated workplaces. This has been instrumental in cutting back manufacturing expenses, optimizing stock, improving the reliability of component supplies, and reducing production downtime.



**Rosatom. State Atomic Energy Corporation.** The unified corporate system “1C ERP Rosatom” is deployed in 90 companies within the industry. Over 5,000 workplaces are automated. Corporate Performance Management, a centralized holding management system, covers 800 workplaces.

**1C:ENTERPRISE**

SOLUTION SUITE FOR  
EFFICIENT MANAGEMENT



### INDUSTRY- AND BUSINESS-SPECIFIC SOLUTIONS

 1C:Real Estate and Rental

 1C:Project Management

 1C:Retail

 1C:CRM

 1C:ITIL

 1C:Maintenance and Repair

 1C:Satellite monitoring

 1C:Management by Objectives and KPI

 1C:PDM

 1C:Billing


 1C:MDM

 1C:GIS

 1C:Environmental protection

 1C:Occupational safety and health (OSH)

 1C:Fire safety

 1C:Industrial safety

 1C:WMS

 1C:TMS



**1C:ENTERPRISE**  
FOR YOUR INDUSTRY



State and municipal  
adiminstration



Health care and medical industry



Public utilities



Service industry



Culture



Real estate, rent



Education and sciences



Industrial production



Agriculture  
and forest management



Construction and development



Fuel and energy sector



Trade industry

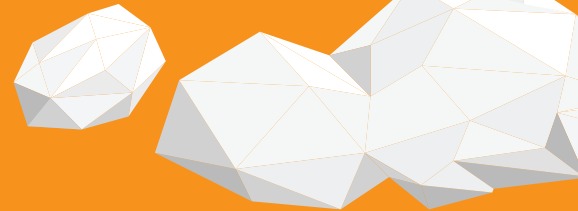


Transport and logistics

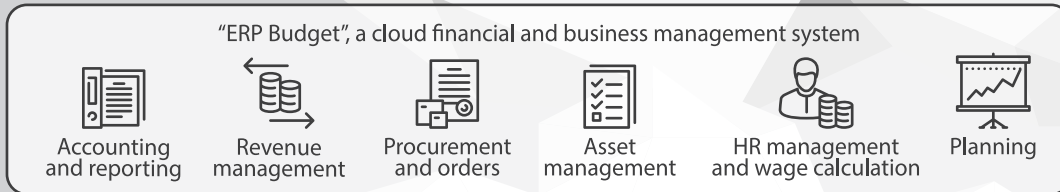
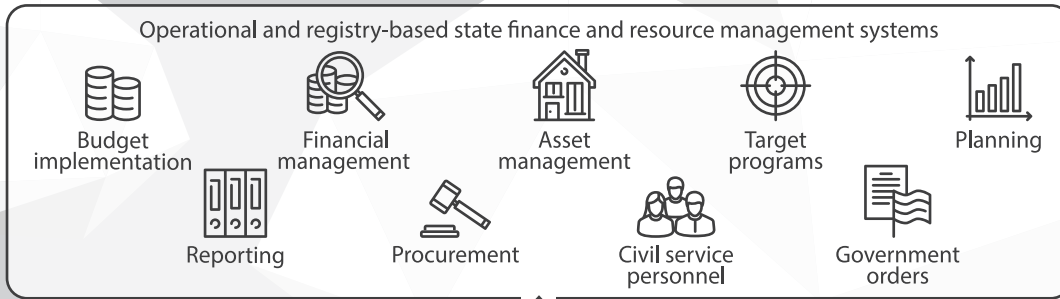
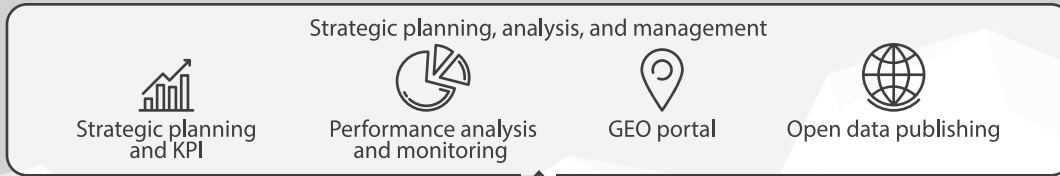


Financial sector

**1C:ENTERPRISE**  
**FOR GOVERNMENT**  
**INSTITUTIONS**



## STATE REGION MANAGEMENT SYSTEM



1C:Medicine



1C:Education



1C:Culture




1C:Public Utilities

The background features a large, irregular orange shape on the left and top, transitioning into a white area on the right. The bottom edge is composed of several overlapping, angular shapes in shades of orange, yellow, and brown, creating a layered, geometric effect.

**1C:ENTERPRISE**  
SAVES TIME AND MONEY

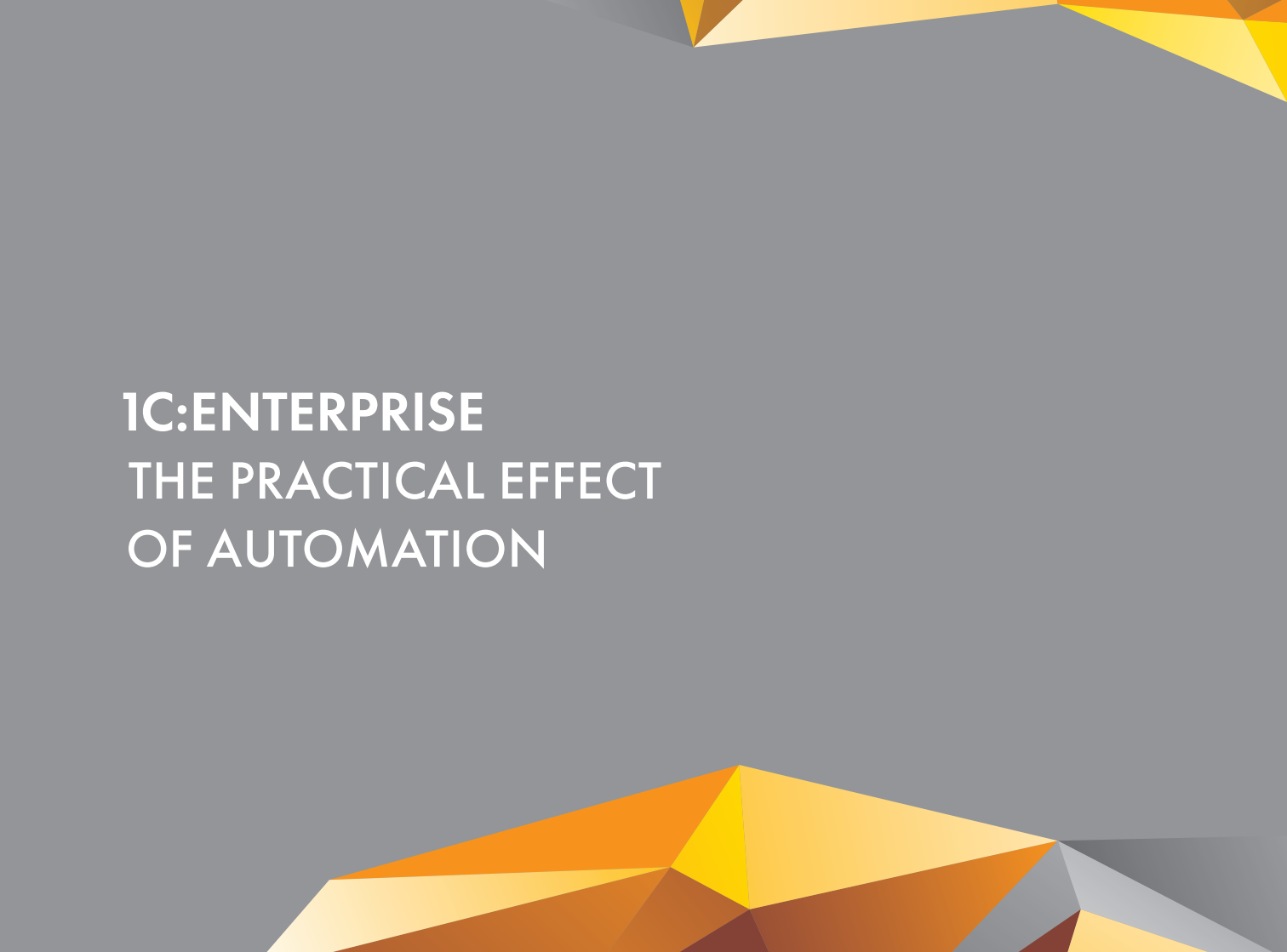




Low ownership cost and significant economic benefits due to the growth of labor productivity and a rapid return on investment

Compared to world-known competitors:

- **1.5–2 times** faster implementation
- Implementation only requires **half the manpower**
- License prices are **significantly more affordable**
- Project implementation cost **2–3 times lower** than competing offers
- Maintenance cost **several times lower**




**1C:ENTERPRISE**  
THE PRACTICAL EFFECT  
OF AUTOMATION

- **8%** reduction in costs of manufactured products
- **20%** stock optimization
- **29%** production volume growth
- **14%** labor productivity growth
- **19%** accounts receivable aging reduction
- **26%** sales order processing time reduction
- **20%** expense reduction
- **14%** profit growth

Average data for the year 2017, according to published performance data for implemented 1C:Enterprise-based ERP solutions.

The background features a complex, abstract geometric design. It consists of several overlapping, angular shapes in various shades of yellow and orange, creating a dynamic and modern aesthetic. The shapes are primarily located on the left and bottom-left sides, with the rest of the background being a solid, bright yellow.

**1C:ENTERPRISE**  
**IS RIGHT BY YOUR SIDE**

- 
- More than **6,900** certified 1C partners
  - Industrial deployment and support quality, **ISO 9001-compliant**
  - Corporate support centers
  - Corporate solution competence centers
  - ERP solution competence centers
  - Consulting centers
  - Certified training centers

The background is a vibrant yellow with a complex, low-poly geometric pattern in shades of orange and red, primarily concentrated in the upper left and right corners. The rest of the background is a solid, bright yellow.

**1C:ENTERPRISE**  
**WORLDWIDE**

- 1C:Enterprise is localized into **17 languages**
- The 1C:Enterprise platform was activated in more than **60 countries** in 2016
- Products and services developed on the 1C:Enterprise platform are used in **Asia, the Middle East, Europe, Africa and the Americas**
- International corporate technology support center
- Online English-based trainings and certification for various developer levels



1C Company  
Moscow, Seleznevskaya str., 21  
Phone: +7 (495) 737-92-57  
[www.1c-dn.com](http://www.1c-dn.com)  
[int@1c.com](mailto:int@1c.com)